



MINISTRY OF EDUCATION
DEPARTMENT OF CONSTRUCTION

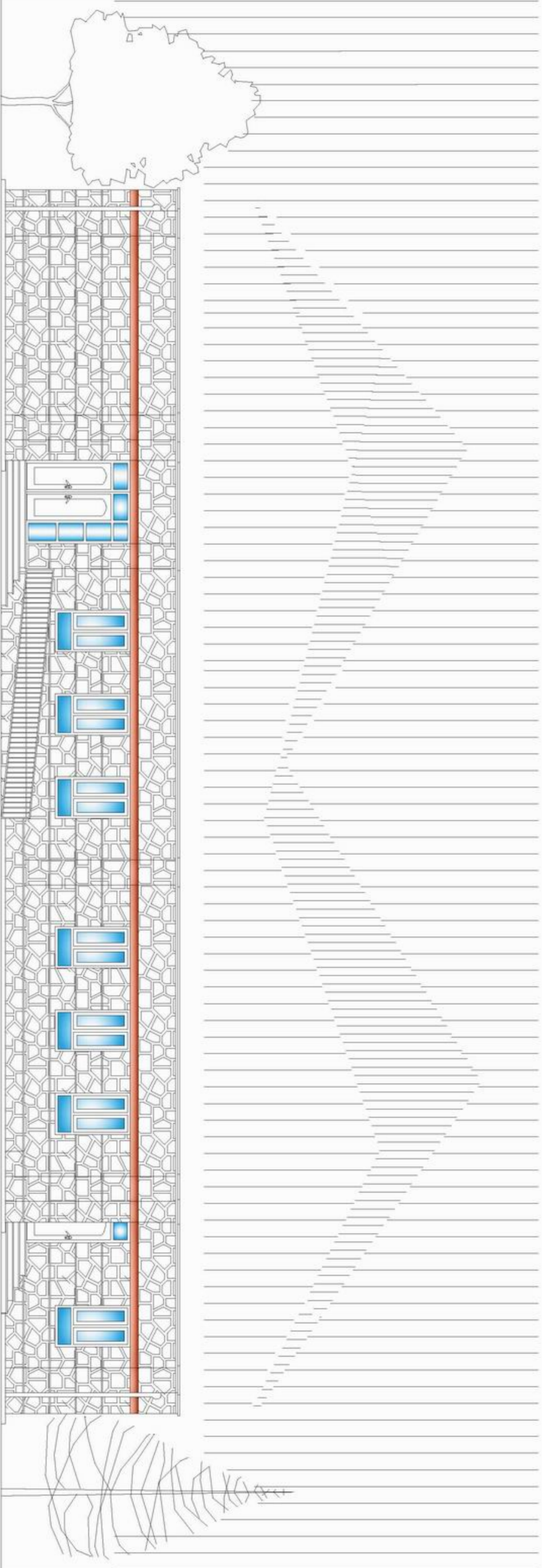


STANDARD SCHOOL DESIGN
IN AFGHANISTAN

ARCHITECT/DESIGN	Zisurrahman Zib	APPROVED DATE	29.08.2006
CHECKED BY	ENGR. BAKZAI	SCALE	As shown (A3)
TECH. APPROVED BY	ENGR. ALAMATIN MAQOOL	DATE	29.08.2006
DRAWING No		SHEET No	1/8

PROJECT NAME: 6 CLASS ROOM-Stone Wall-I-beam
DRAWING TITLE: FRONT ELEVATION

Front Elevation





MINISTRY OF EDUCATION
DEPARTMENT OF CONSTRUCTION

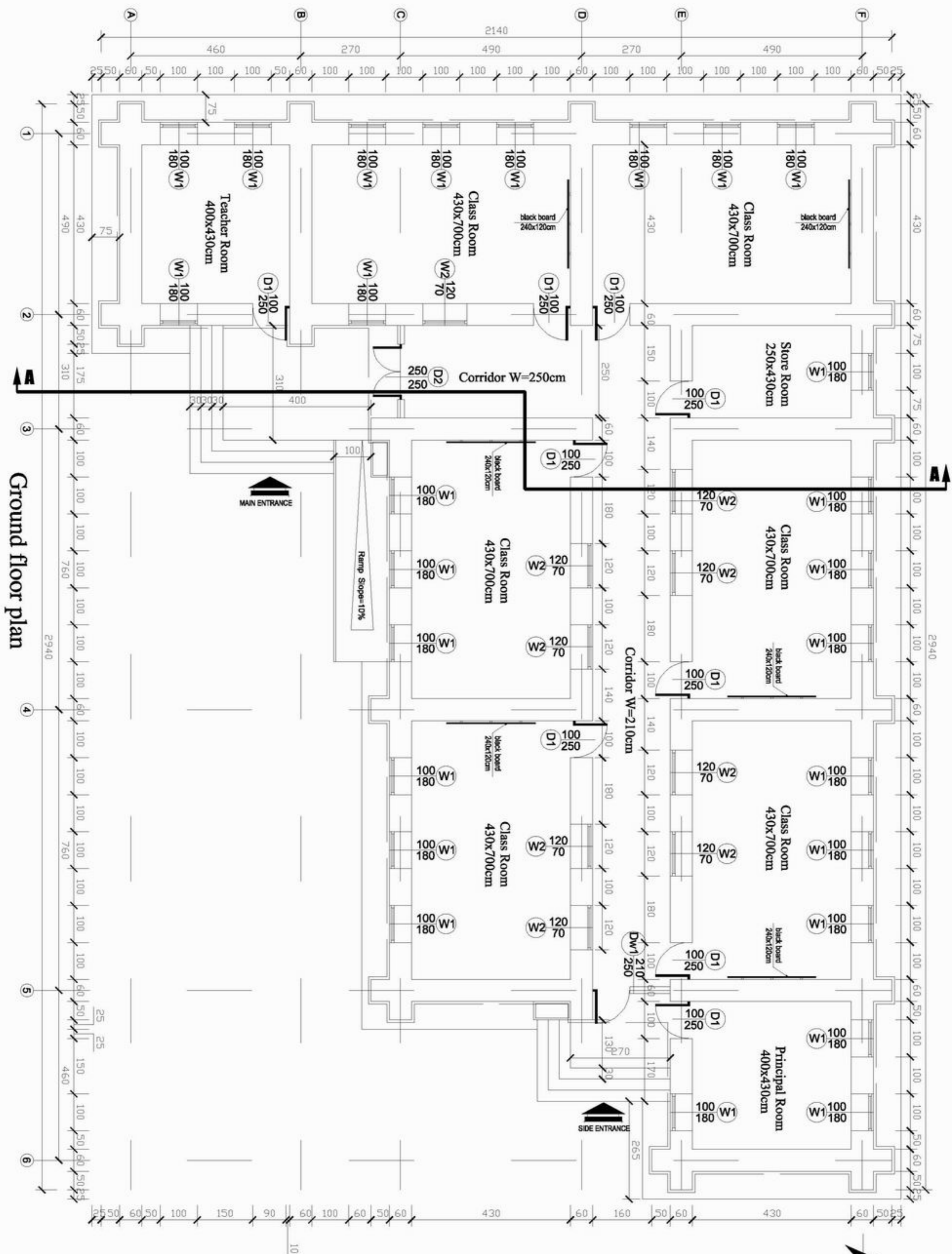


STANDARD SCHOOL DESIGN
IN AFGHANISTAN

ARCHITECT/DESIGNER	Ziurrahman Zia	APPROVED/DATE	Am Shams (AS)
CHECKED BY	ENR/ELIZAVET	SCALE	1:500
TECH. APPROVED BY	ENG/AS MATEINVAQOL	DATE	29.08.2006
DRAWING No	2		
SHEET No	8		

PROJECT NAME
6 CLASS ROOM-Stone Wall-I-beam

DRAWING TITLE
GROUND FLOOR PLAN



Ground floor plan





MINISTRY OF EDUCATION
DEPARTMENT OF CONSTRUCTION

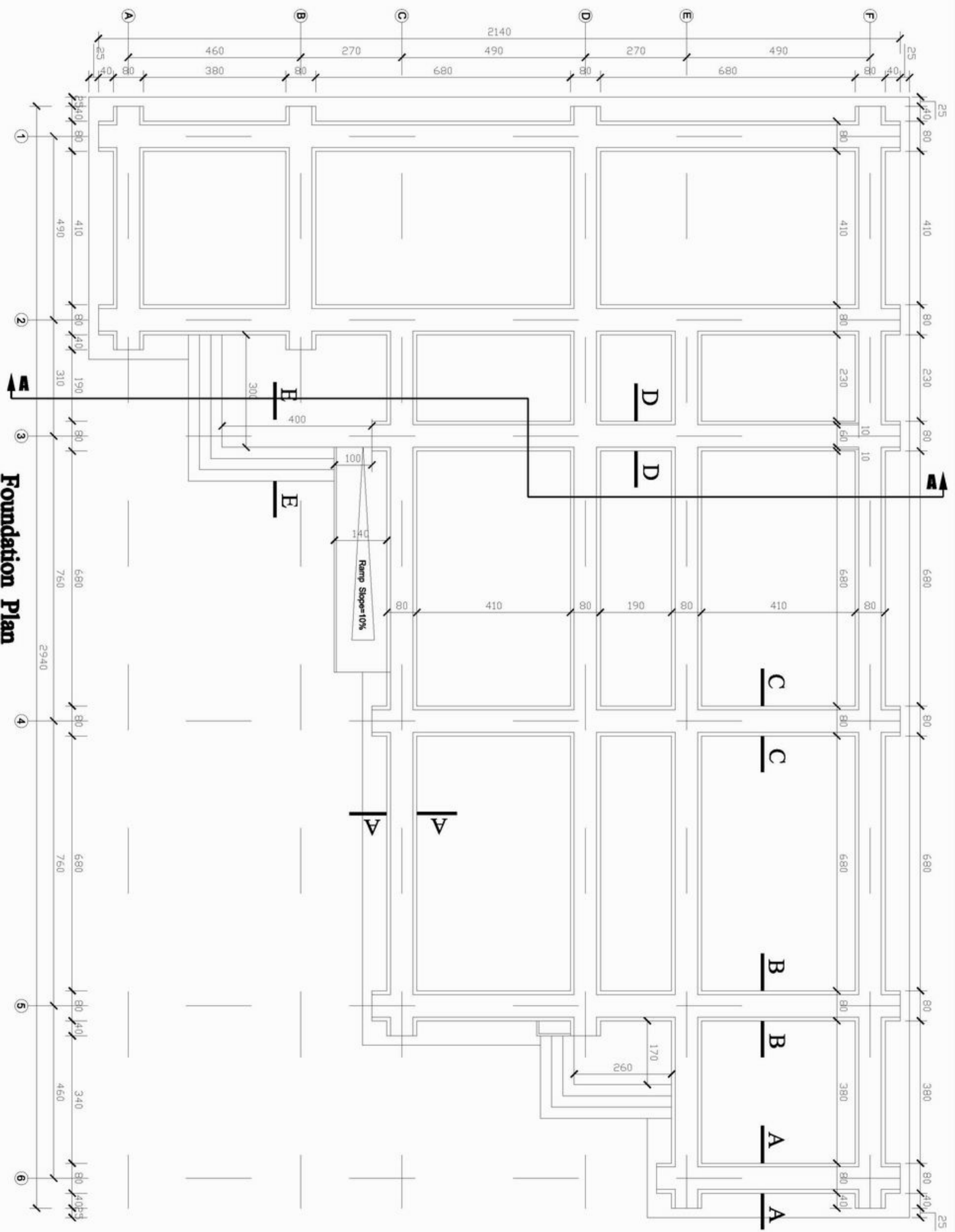


STANDARD SCHOOL DESIGN
IN AFGHANISTAN

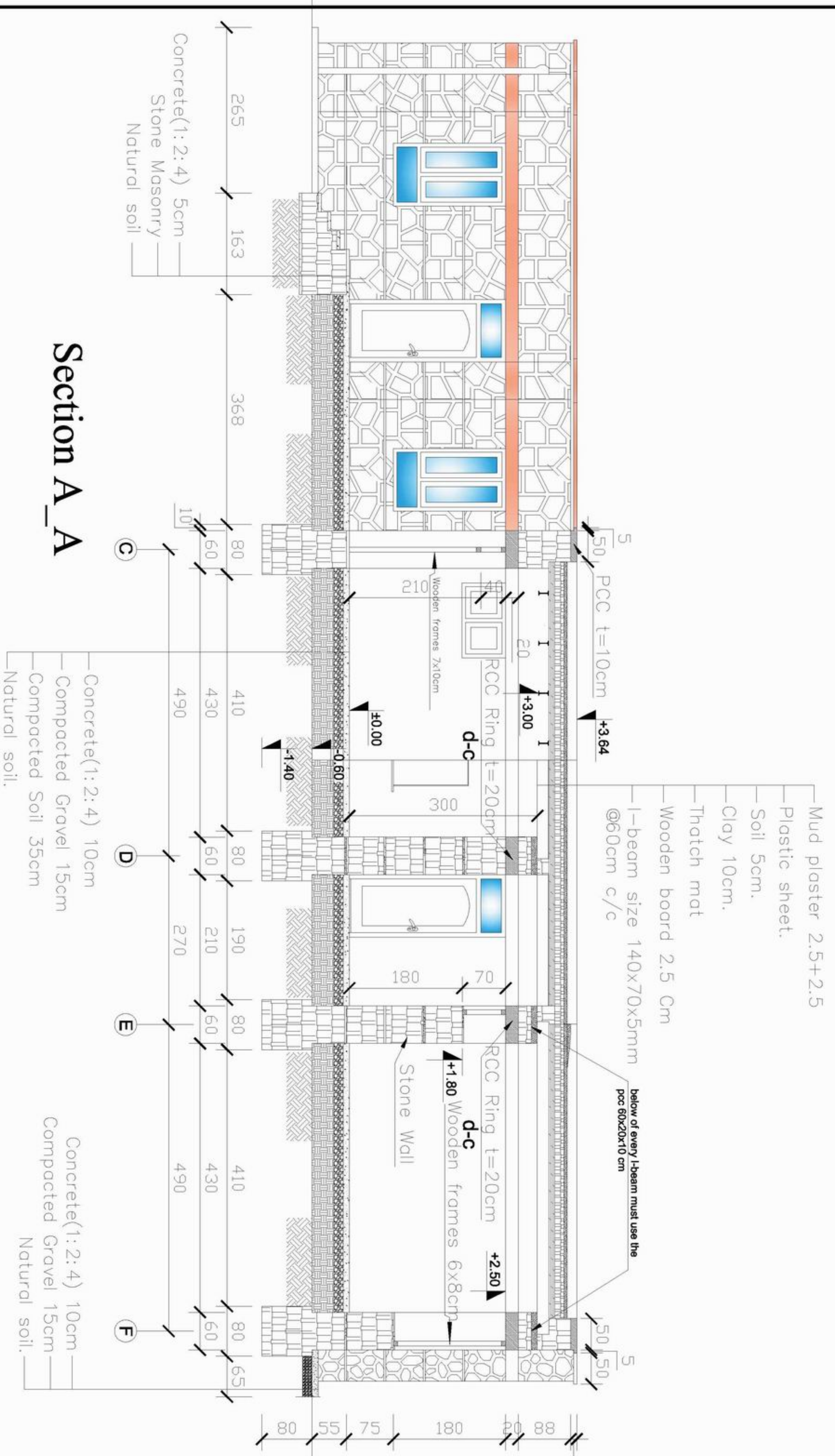
ARCHITECT/DRAWN	Ziaurrahman Zia	APPROVED/DATE	29/08/2006
CHECKED BY	ENG. GIBRAZAI	SCALE	As shown (A3)
TECH. APPROVED BY	ENG. ALI MATIN MOJIB	DATE	29/08/2006
DRAWING No	3	SHEET No	8

PROJECT NAME
6 CLASS ROOM- Stone Wall-I-beam

DRAWING TITLE
FOUNDATION PLAN

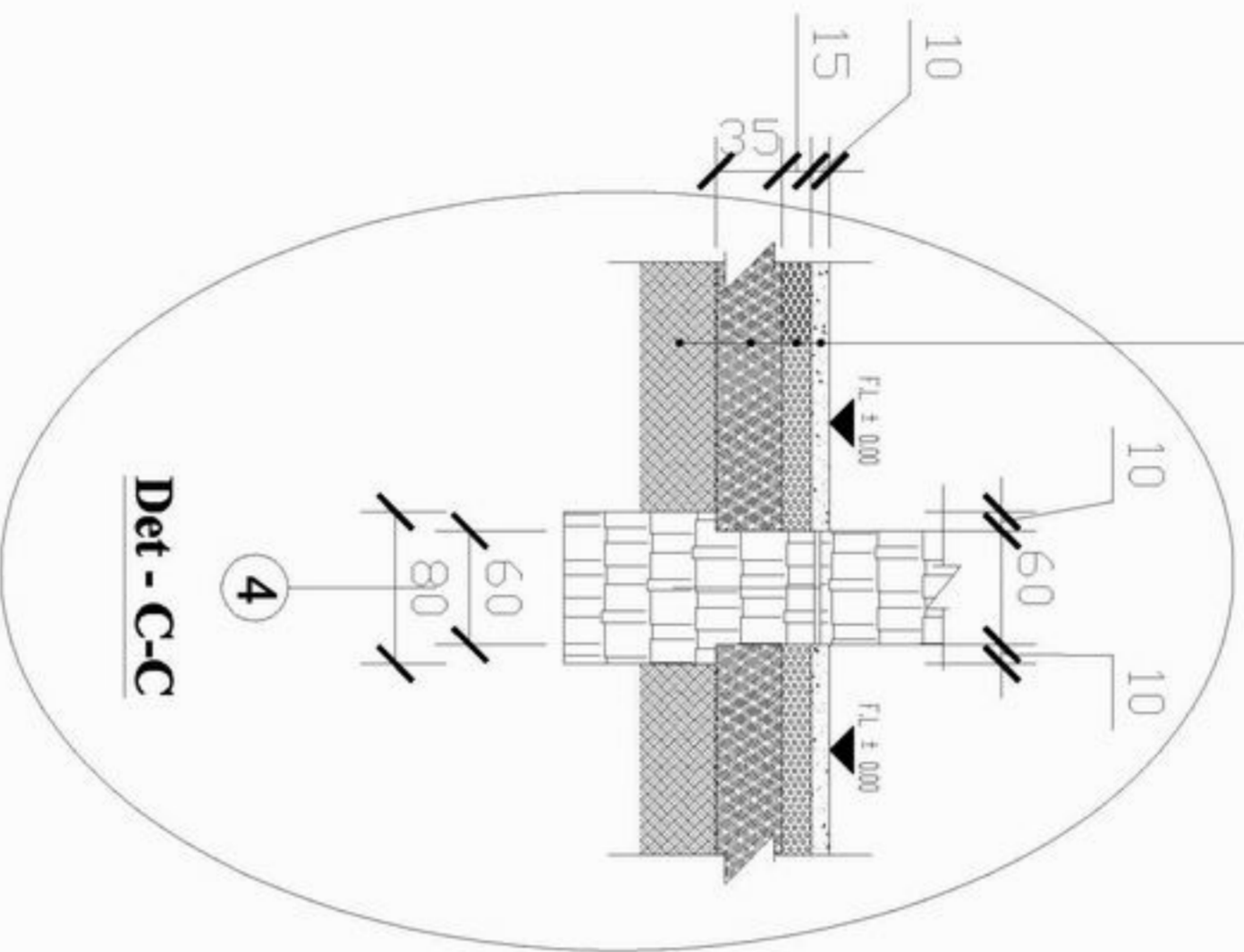


Foundation Plan

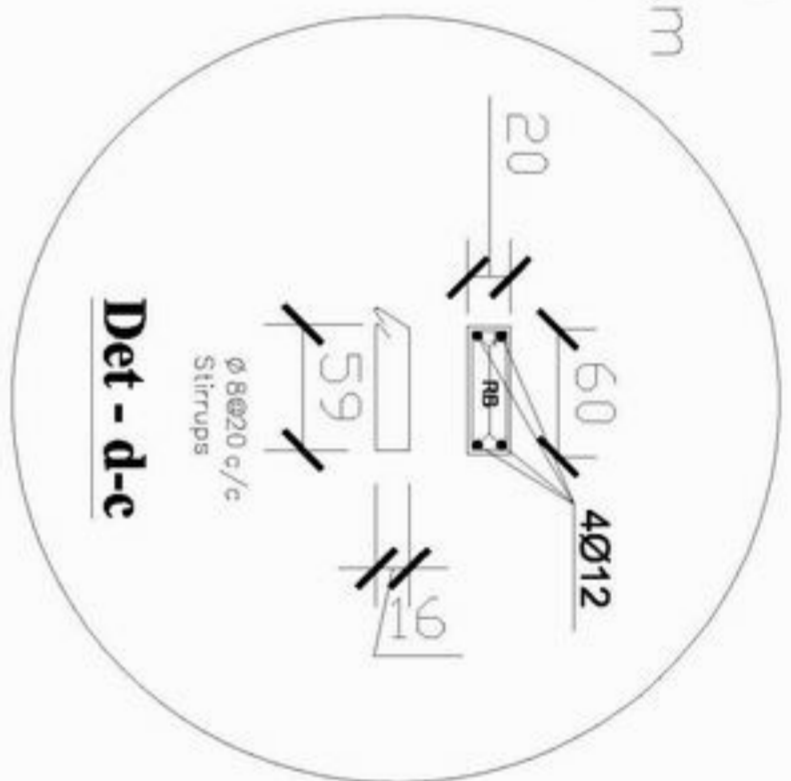


 MINISTRY OF EDUCATION DEPARTMENT OF CONSTRUCTION		 STANDARD SCHOOL DESIGN IN AFGHANISTAN	
ARCHITECT/DRAWN	Zisurrahman Zia	APPROVED/DATE	As shown (4/8)
CHECKED BY	ENGINER/KAZAF	SCALE	
TECH. APPROVED BY	ENGLAB/MATIN/VAJOU	DATE	29.08.2006
PROJECT NAME		DRAWING No	
6 CLASS ROOM-Stone Wall-I-beam		4	
DRAWING TITLE		SHEET No	
SECTION A_A		8	

- Concrete(1:2:4) 10cm
- Compacted Gravel 15cm
- Compacted Soil 35cm
- Natural soil.



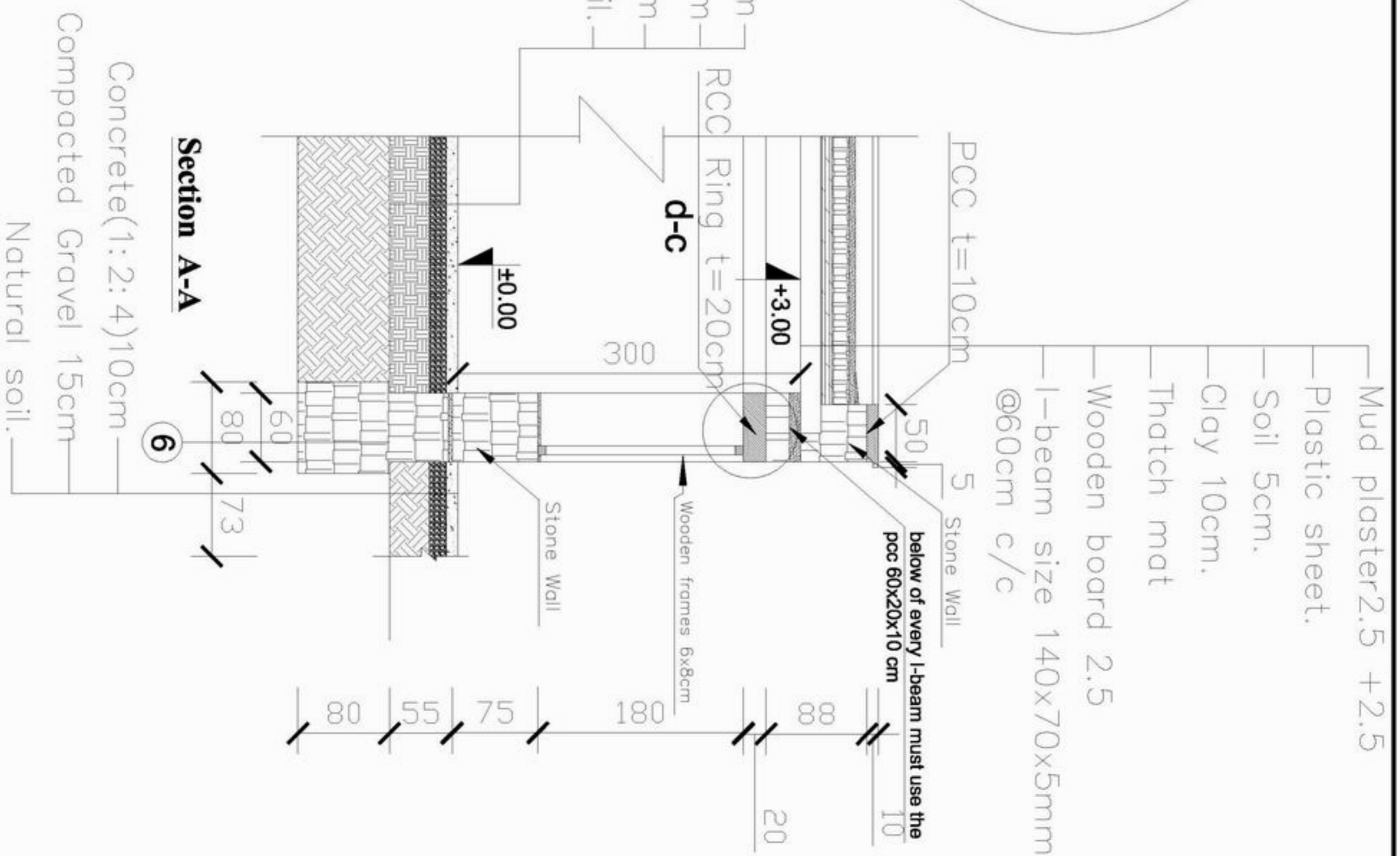
Det - C-C



Det - d-c

- Concrete(1:2:4) 10cm
- Compacted Gravel 15cm
- Compacted Soil 35cm
- Natural soil.

Details



Section A-A

- Concrete(1:2:4)10cm
- Compacted Gravel 15cm
- Natural soil.

- Mud plaster 2.5 + 2.5
- Plastic sheet.
- Soil 5cm.
- Clay 10cm.
- Thatch mat
- Wooden board 2.5
- I-beam size 140x70x5mm @60cm c/c



MINISTRY OF EDUCATION
DEPARTMENT OF CONSTRUCTION

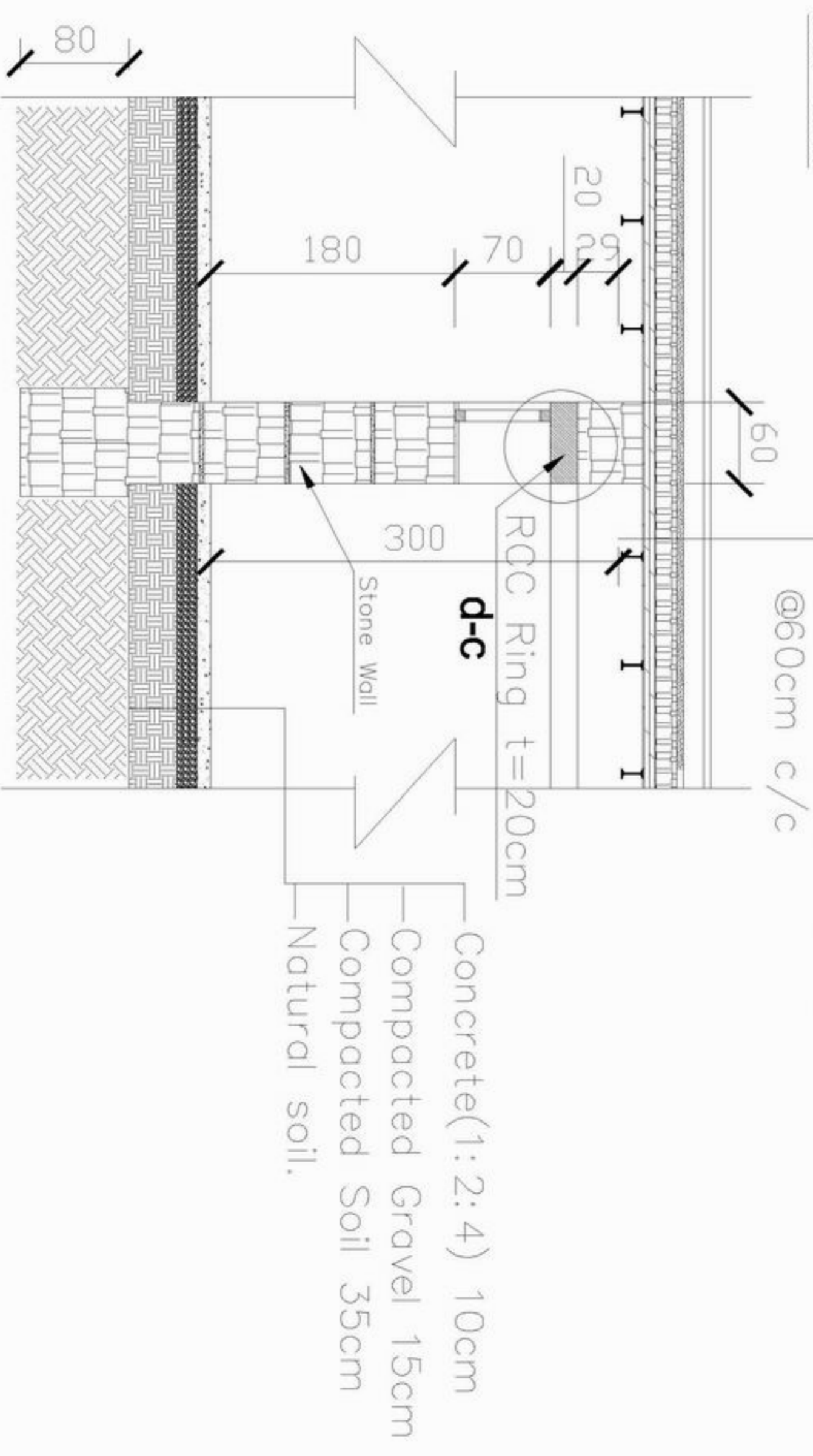
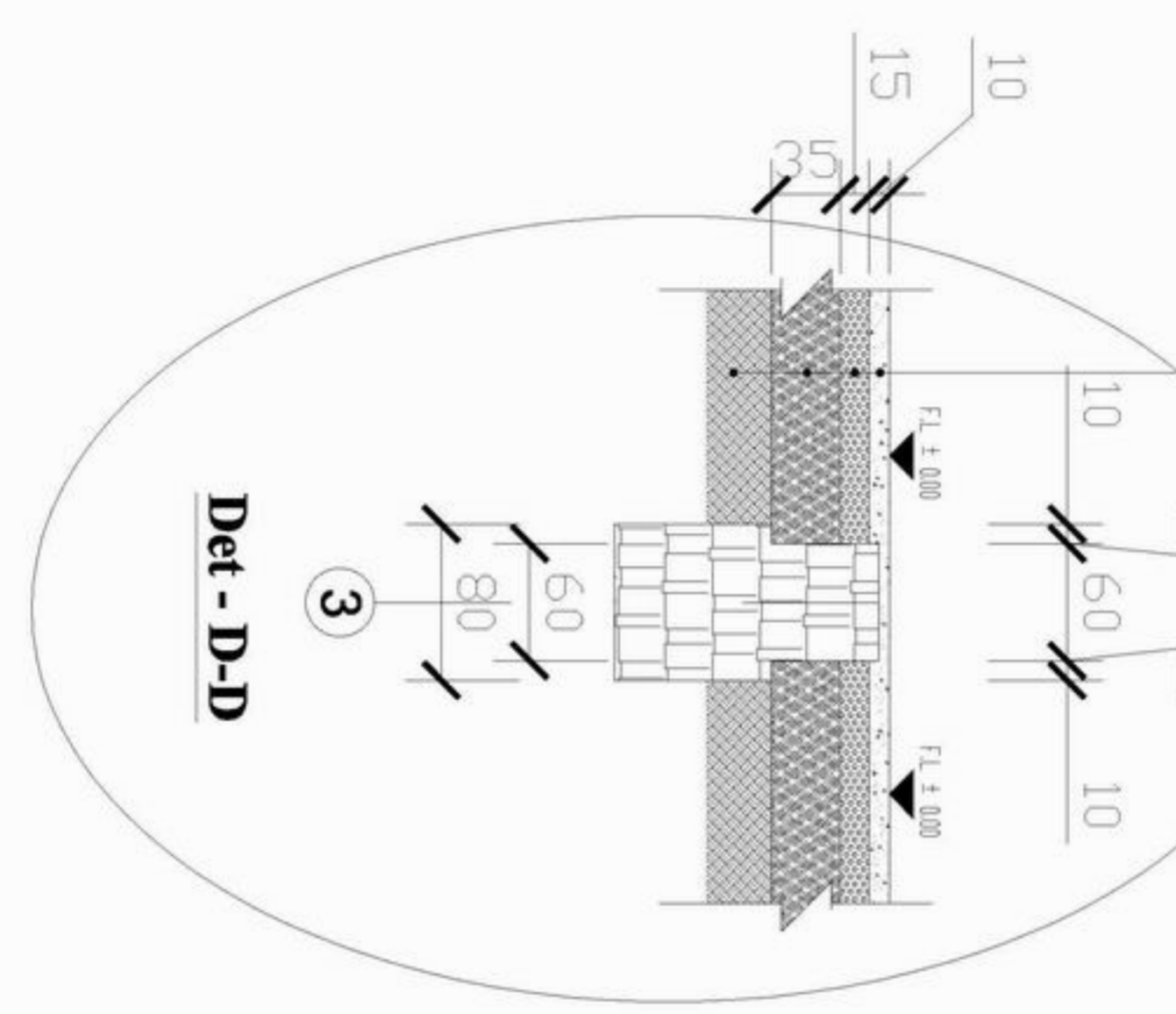
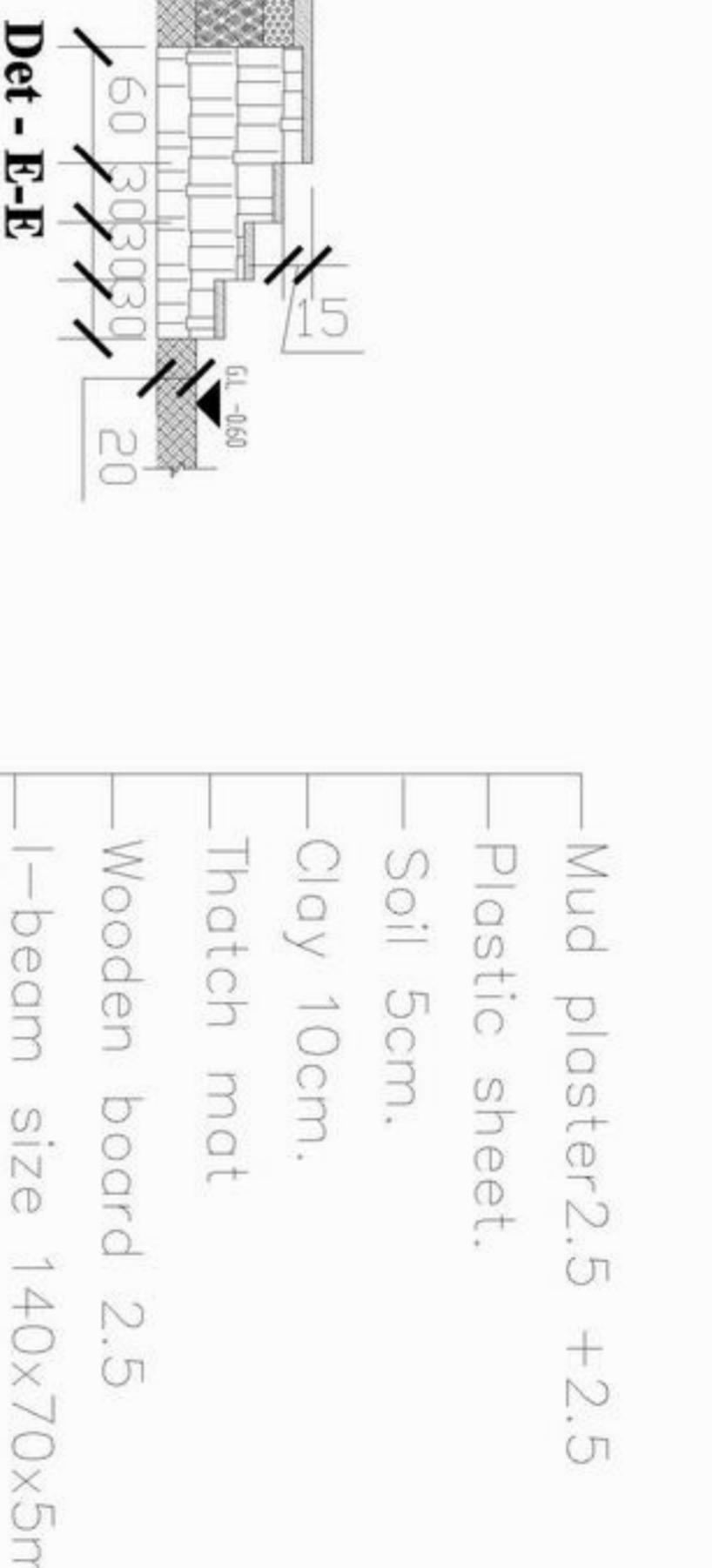
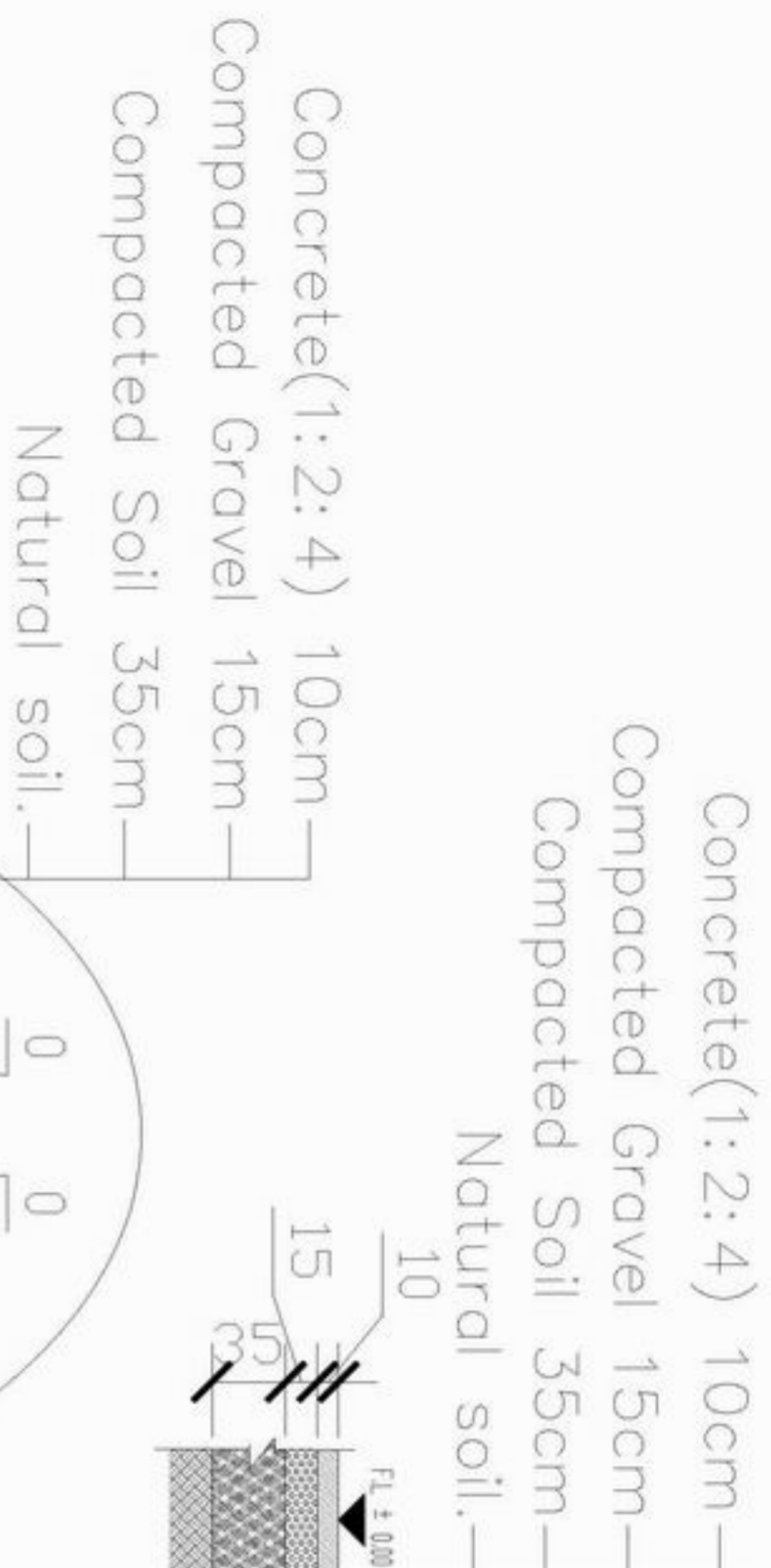


STANDARD SCHOOL DESIGN
IN AFGHANISTAN

ARCHITECT/DRAWN	Zisaurahman Zia	APPROVED/DATE	29.08.2006
CHECKED BY	ENGINERBAKAT	SCALE	As shown (A5)
TECH. APPROVED BY	ENGAJALAMIN MAQOL	DATE	29.08.2006

DRAWING No	5
SHEET No	8

PROJECT NAME	6 CLASS ROOM-Stone Wall-I-beam
DRAWING TITLE	DETAILS



Details

Section B-B

 MINISTRY OF EDUCATION DEPARTMENT OF CONSTRUCTION	 STANDARD SCHOOL DESIGN IN AFGHANISTAN	ARCHITECT/DRAWN	Ziurrahman Zia	APPROVED/DATE	29.08.2006	DRAWING No	6	PROJECT NAME	6 CLASS ROOM- Stone Wall-I-beam
		CHECKED BY	ENGINER/BAZAF	SCALE	29.08.2006	SHEET No	8	DRAWING TITLE	DETAILS
		TECH. APPROVED BY	ENGAJ/AMIN/MAQOL	DATE	29.08.2006				

Schedule of Window & Door

Type	Door 1	Door 2	Door & Window 1	Window 1	Window 2
Scheme					
Quantity	9	1	1	26	9

Detail of Window & Door



MINISTRY OF EDUCATION
DEPARTMENT OF CONSTRUCTION



STANDARD SCHOOL DESIGN
IN AFGHANISTAN

ARCHITECT/DRAWN
CHECKED BY
TECH. APPROVED BY

Ziaurrahman zia
ENR. GH. BAZAAT
ENR. AS. WATIN MOGOL

APPROVED/DATE
SCALE
DATE

As shown (AS)
29.08.2006

DRAWING No
SHEET No

8
8

PROJECT NAME
DRAWING TITLE

6 CLASS ROOM-Stone Wall-I-beam
Detail of window and door